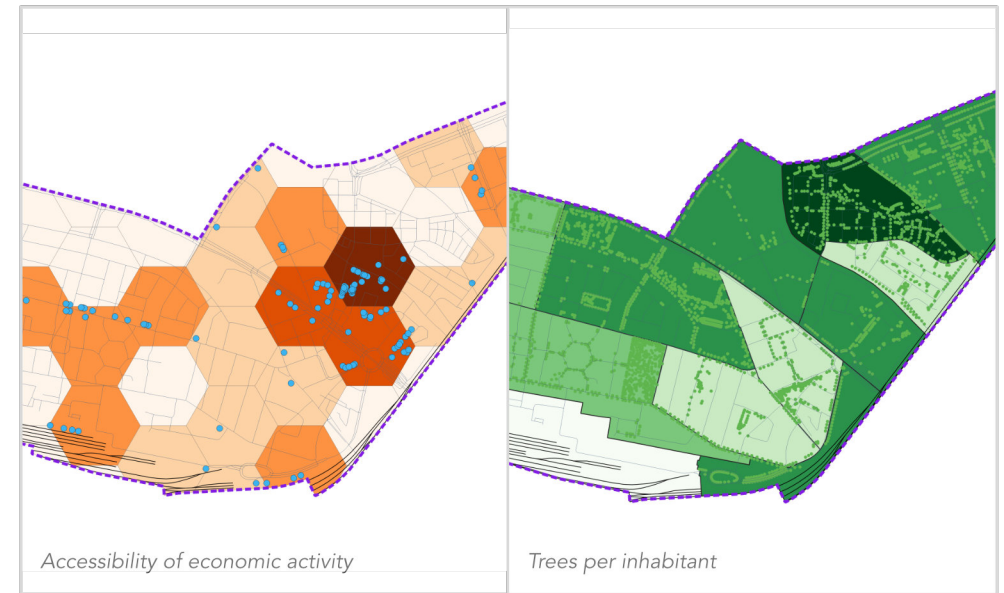




Healthy Living Environment Assessment of Amersfoort

Client Municipality of Amersfoort
Location Soesterkwartier & Eemkwartier, Amersfoort, The Netherlands
Year 2026

'Langs Eem en Spoor' is currently one of the most significant urban developments in Amersfoort. Located directly north of the Central Station, the project aims to transform a formerly isolated area – separated by the river Eem, industrial sites, and railway tracks – into a high-density, mixed-use urban district. The plan includes the realisation of approximately 5,000 new homes, combined with commercial and social facilities. By repurposing historic railway buildings and creating new green structures, the development seeks to break down historical barriers. A key core value within the draft urban vision (Omgevingsprogramma) is "healthy living in the compact city."



Healthy Cities Strategy

In this Healthy Living Environment Assessment, we looked beyond standard environmental factors like noise and air quality. Our assessment bridges the gap between spatial planning and tangible health gains – such as physical activity and mental resilience – to ensure that this large-scale transition truly enhances the well-being of its residents.

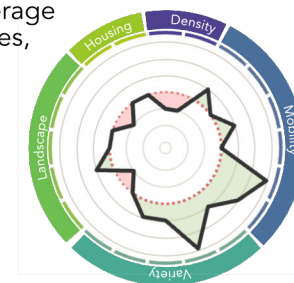
- 1 Diagnosis & Baseline Measurement**
An integrated neighbourhood scan, combining quantitative data with qualitative analysis to uncover specific local needs.
- 2 Plan Impact Analysis & Assessment**
Identified trade-offs and quantified impact in terms of avoided DALYs, mortality reduction, and healthcare cost savings.
- 3 Synthesis & Communication**
Translating technical results into a compelling narrative for both decision-makers and residents.

Findings and Achievements

While we are putting the final touches on this project, the diagnosis phase has already pinpointed some critical urban health priorities for the community.

Health Priorities

Mainly mental issues such as anxiety, loneliness and depression prevail, next to physical indicators such as obesity and heat stress. That means that the goals for this area should be a good design of public space, higher population and economic density for a better coverage of (public) services, and increasing green coverage.



Goals	
Urban determinants	Impact on priorities
Density	
Population density	50 %
Business density	42 %
Mobility	
Street connectivity	42 %
Location connectivity	42 %
Cyclability	33 %
Walkability	25 %
Public transport	33 %
Traffic	42 %
Variety	
Public services	42 %
Sports facilities	25 %
Amenities	33 %
Public spaces	75 %
Food environment	25 %
Landscape	
Green coverage	83 %
Blue spaces	25 %
Green diversity	50 %
Green continuity	33 %
Urban landscape	42 %